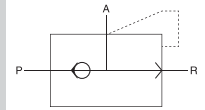


ES-06



KKP-08



2

How to Order?

Series No.	Port size	Tooth type code
ES: Shuttle valve	06: 1/8" 15: 1/2"	Blank: G
	08: 1/4" 20: 3/4"	P: PT
	10: 3/8" 25: 1"	T: NPT

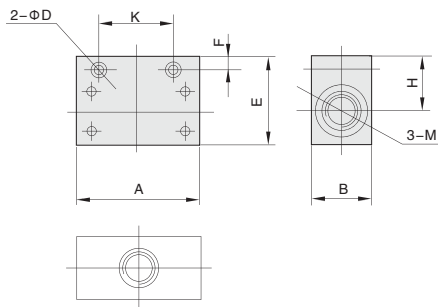
Order Example:

ES series shuttle valve, 1/4" port size, G thread, ERP code is: ES-08

Specifications

Model	ES-06	ES-08	ES-10	ES-15	ES-20	ES-25
Working medium	Clean air (After 40 μm filtration)					
Lubrication	Not required					
Working pressure (MPa)	0.05-0.8					
Guaranteed pressure (MPa)	1.2					
Working temperature (°C)	-5-60					
Port size	1/8	1/4	3/8	1/2	3/4	1

Main Dimension



Model	Port Size	A	K	B	E	H	F	D	Thread
ES-6	6	54	36	25	40	28	9	4.8	G1/8
ES-8	8	54	36	25	40	28	9	4.8	G1/4
ES-10	10	70	48	34	50	34	10	7	G3/8
ES-15	15	70	48	34	50	34	10	7	G1/2
ES-20	20	93	72	50	70	49	12	7	G3/4
ES-25	25	93	72	50	70	49	12	7	G1

Product Features

* Normally, it isn't used in pneumatic system separately, always used with main valve together, offering a good assistance for main valve to control the whole system, so the whole system can work very well.

2

How to Order?

Series No.	Port size	Tooth type code
KKP: Quick exhaust valve	06: 1/8" 10: 3/8"	Blank: G
	08: 1/4" 15: 1/2"	P: PT
		T: NPT

Order Example:

KKP quick exhaust valve, 1/4" port size, G thread, ERP code is: KKP-08

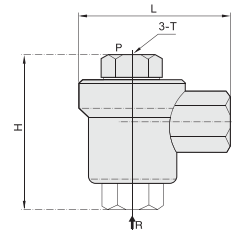
Product Features

* Normally, it isn't used in pneumatic system separately, always used with main valve together, offering a good assistance for main valve to control the whole system, so the system can work very well.

Specifications

Model	KKP-06	KKP-08	KKP-10	KKP-15
Working medium	Clean air (After 40 μm filtration)			
Working pressure (MPa)	0.15-0.8			
Guaranteed pressure resistance (MPa)	1.2			
Working temperature (°C)	-5-60			
Port size	1/8 - 1/2			

Main Dimension



Model	T	H	L
KKP-6	G1/8	37	41.5
KKP-8	G1/4	45.5	38
KKP-10	G3/8	56	46.5
KKP-15	G1/2	67	54