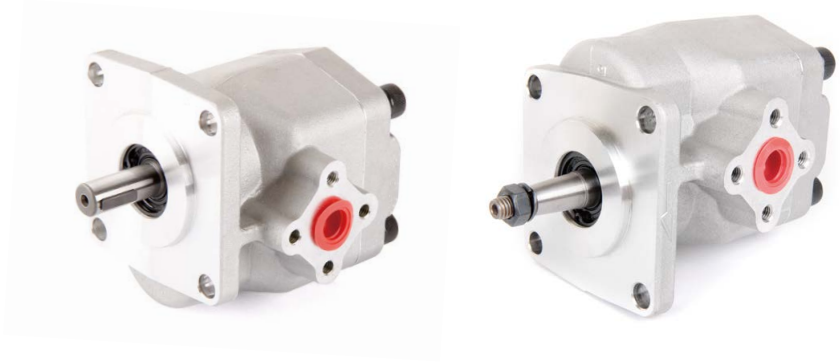
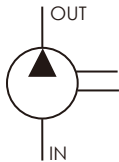


HGP-2A

- Displacement : 2~12 cc/rev
- Max. Pressure : 250 kgf/cm²
(3500psi)
- Flange : JIS 4-bolt



SCHEMATIC SYMBOL



ORDER CODES

HGP-2A	-	F	-	12	-	R	-	W1	-	4BJ	-	P2
1		2		3		4		5		6		7

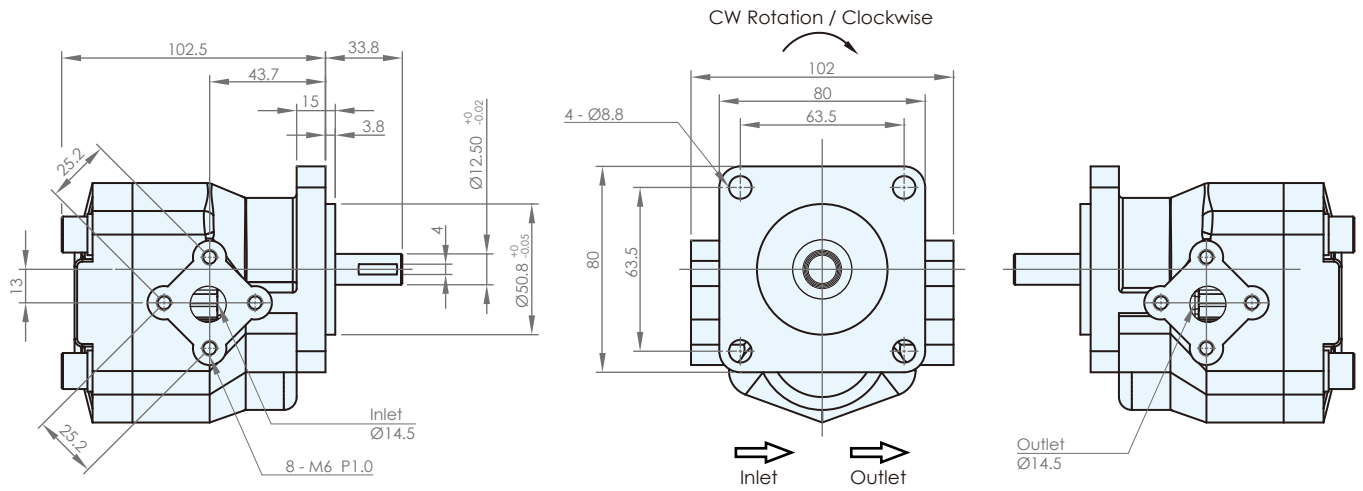
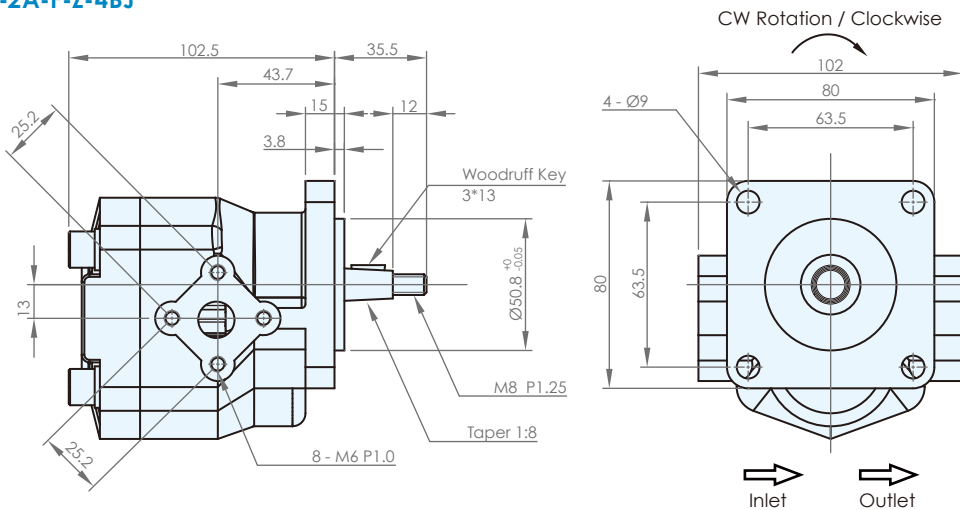
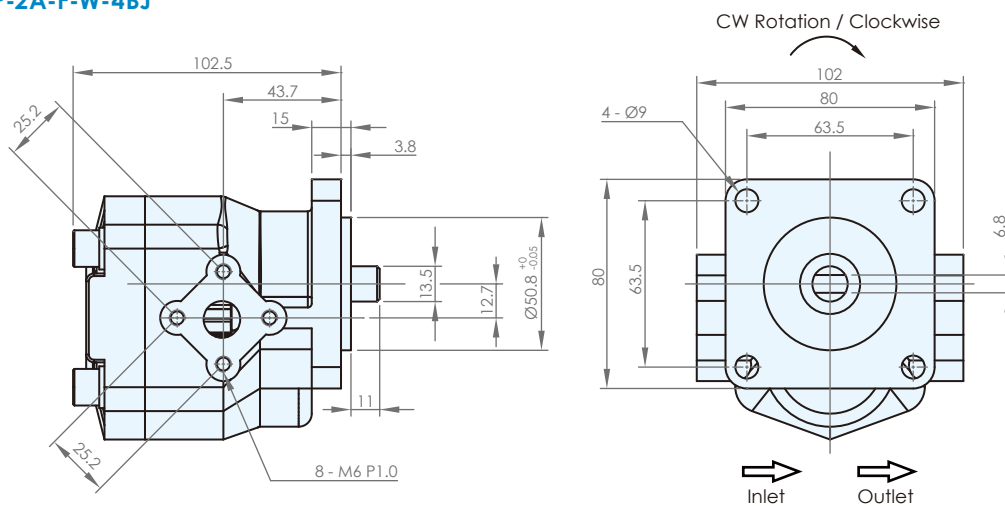
1	Model Name	HGP-2A	
2	Mounting	F	flange type
		L	foot type
3	Delivery Capacity	2, 25, 3, 4, 5, 6, 8, 9, 11, 12	
4	Rotation Direction	R	clockwise
		L	counter - clockwise
5	Shaft Type *	W : tang shaft Y : spline shaft	X : straight shaft Z : taper shaft
6	Flange Mounting Type	4BJ	JIS 4-bolt
7	Inlet and Outlet *	F : flange type(F1) P : PT(P1~P2)	G : G, BSP, PF(G1~G2)

* The dimension of shafts and inlet & outlet sizes please refer to Page 15.

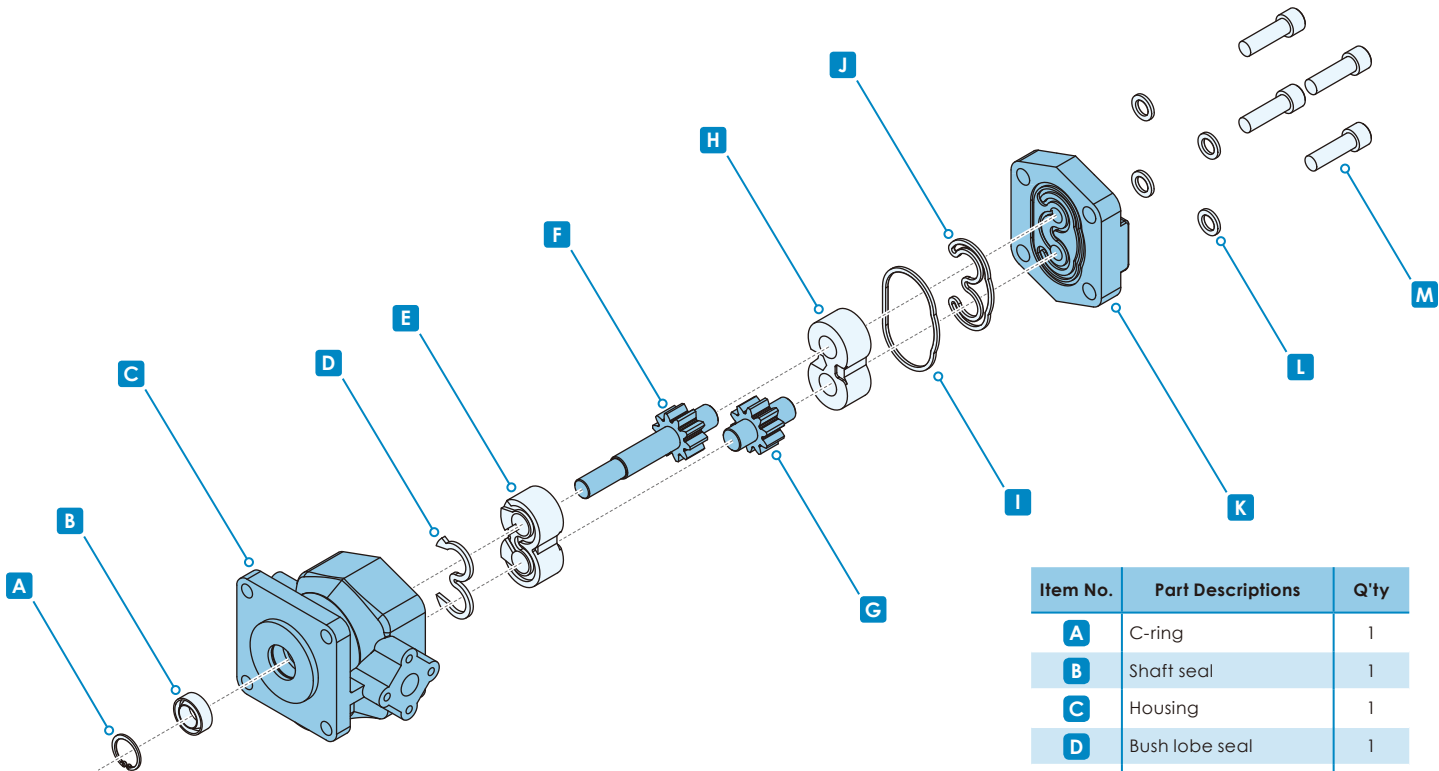
SPECIFICATIONS

Model	Accurate Displacement Capacity (cc/rev)	Operational Pressure (kgf/cm ²)	Max. Pressure (kgf/cm ²)	Speed (r.p.m.)			Weight (kg)
				Rate	Max.	Min.	
HGP-2A-2	2	210	250	1800	5000	1000	1.69
HGP-2A-25	2.5	210	250	1800	5000	850	1.70
HGP-2A-3	3	210	250	1800	5000	850	1.70
HGP-2A-4	4	210	250	1800	4500	800	1.71
HGP-2A-5	5	210	250	1800	3500	700	1.71
HGP-2A-6	6	210	250	1800	3500	700	1.72
HGP-2A-8	7.5	210	250	1800	3000	600	1.74
HGP-2A-9	9	210	250	1800	2500	550	1.74
HGP-2A-11	10.5	210	250	1800	2000	500	1.74
HGP-2A-12	12	175	210	1800	2000	500	1.76

* HGP-2A-25 and HGP-2A-5 do not belong to regular products. Customized service can be provided.

DIMENSIONS (unit : mm)
HGP-2A-F-X-4BJ

HGP-2A-F-Z-4BJ

HGP-2A-F-W-4BJ


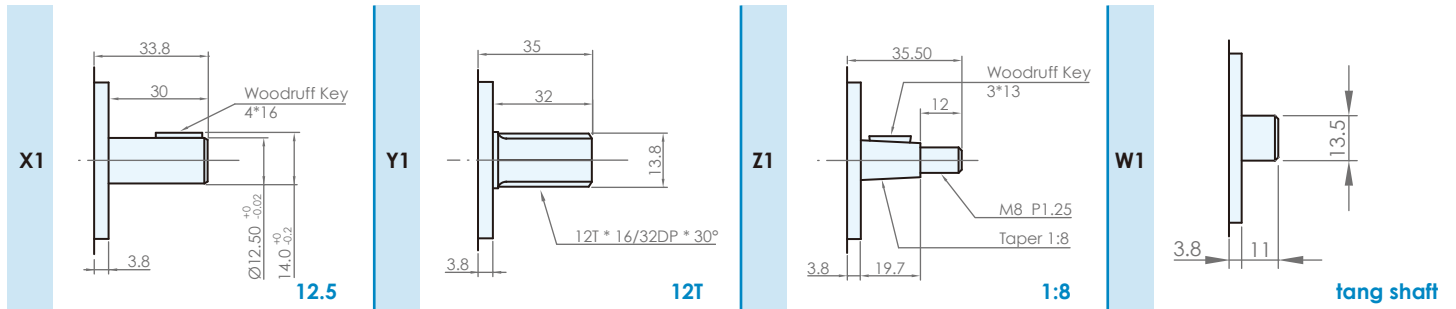
DECOMPOSITION CHARTS



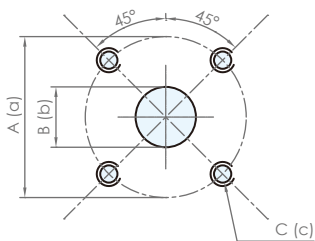
Item No.	Part Descriptions	Q'ty
A	C-ring	1
B	Shaft seal	1
C	Housing	1
D	Bush lobe seal	1
E	Matching bearing	1
F	Drive gear	1
G	Drive gear	1
H	Matching bearing	1
I	O-ring	1
J	Back-up ring	1
K	Rear cover	1
L	Bolt washer	4
M	Bolt	4

ADDITIONAL DIMENSION

Dimension of Shaft

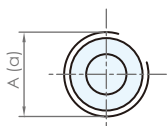


Inlet and Outlet Size



Flange Type

Code	Inlet			Outlet		
	A	B	C	a	b	c
F1	35	14.5	M6	35	14.5	M6



G, BSP, PF

Code	Inlet	Outlet
	A	a
G1	G 3/8"	G 3/8"
G2	G 1/2"	G 1/2"

PT

Code	Inlet	Outlet
	A	a
P1	3/8" PT	3/8" PT
P2	1/2" PT	1/2" PT