

2

How to Order?

Series No.	Port size		Tooth type code
EA: one-way valve	06: 1/8"	20: 3/4"	Blank: G
	08: 1/4"	25: 1"	P: PT
	10: 3/8"	32: 1 1/4"	T: NPT
	15: 1/2"	40: 1-1/2"	
		50: 2"	

Order Example:

EA series one way valve, 1/4" port size, G thread, ERP code is : EA-08

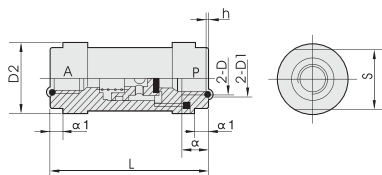
Product Features

* Normally, it isn't used in pneumatic system separately, always used with main valve together, offering a good assistance for main valve to control the whole system, so the system can work very well.

Specifications

Model	EA-06	EA-08	EA-10	EA-15	EA-20	EA-25
Working medium	Clean air(After 40 μm filtration)					
Lubrication	Not required					
Working pressure (MPa)	0.05-0.8					
Guaranteed pressure (MPa)	1.2					
Working temperature (°C)	-5-60					
Port size	1/8	1/4	3/8	1/2	3/4	1

Main Dimension



Model	Port size	D	D1	D2	S	L	α	α1	H
EA-6	6	G1/8	φ13	φ25	24	63	10	6	1.4 ⁰ _{-0.1}
EA-8	8	G1/4	φ16	φ25	24	63	12	6	1.4 ⁰ _{-0.1}
EA-10	10	G3/8	φ20	φ38	36	81	14	8	1.8 ⁰ _{-0.1}
EA-15	15	G1/2	φ26	φ38	36	81	14	8	1.8 ⁰ _{-0.1}
EA-20	20	G3/4	φ32	φ49	46	109	21	10	1.8 ⁰ _{-0.1}
EA-25	25	G1	φ40	φ49	46	109	23	10	2.7 ⁰ _{-0.12}
EA-32	32	G1-1/4	φ48	φ86	75	160	25	18	2.7 ⁰ _{-0.12}
EA-40	40	G1-1/2	φ54	φ86	75	160	26	18	2.7 ⁰ _{-0.12}
EA-50	50	G2	φ70	φ86	90	160	26	26	4.5 ⁰ _{-0.18}

How to Order?

Series No.	Port size		Type	Tooth type code
YHS: Slide valve	06: 1/8"	15: 1/2"	Blank: Standard type MM: Double male thread type FF: Double female thread type MF: One male and the other female type	Blank: G
	08: 1/4"	20: 3/4"		P: PT
	10: 3/8"	25: 1"		T: NPT

Order Example:

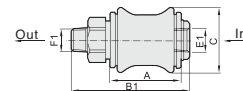
YHS slide valve, 1/4" port size, double male thread type, G thread ,ERP code is: YHS-08MM

Specifications

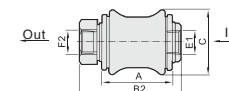
Model	YHS-06	YHS-08	YHS-10	YHS-15	YHS-20	YHS-25
Working medium	Clean air(After 40 μm filtration)					
Acting type	External control					
Lubrication	Not required					
Working pressure (MPa)	0-1.0					
Guaranteed pressure (MPa)	1.5					
Working temperature (°C)	-5-60					
Port size	1/8	1/4	3/8	1/2	3/4	1

Main Dimension

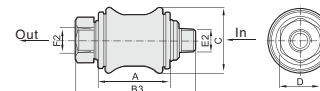
Standard type



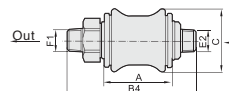
Double female thread type (FF)



One male and the other female thread type (MF)



Double male thread type(MM)



Model	A	B1	B2	B3	B4	C
YHS06	20	38	38	38	46	20
YHS08	32	58	58	58	68	26
YHS10	32	58	58	58	69	32
YHS15	40	80	80	80	94	38
YHS20	45	85	85	85	101	46
YHS25	45	85	85	85	101	52

Model	D	E1	E2	F1	F2
YHS06	14	G1/8"	G1/8"	G1/8"	G1/8"
YHS08	19	G1/4"	G1/4"	G1/4"	G1/4"
YHS10	22	G3/8"	G3/8"	G3/8"	G3/8"
YHS15	27	G1/2"	G1/2"	G1/2"	G1/2"
YHS20	34	G3/4"	G3/4"	G3/4"	G3/4"
YHS25	38	G1"	G1"	G1"	G1"