

How to Order?

Series No	Type No	Bore X	Stroke	Magnet No	Thread type
EXS	M: slide bearing	6 10 12 16 20 ...	25 50 75 ...	S: with magnet	Blank: G P: PT T: NPT

Order Example:
EXS series, Linear Bearing type, Bore 6mm, stroke 30mm ERP code is: EXSL6X30-S
Note: The cylinder's bore and stroke, mounting accessories details according to drawings.

Specifications

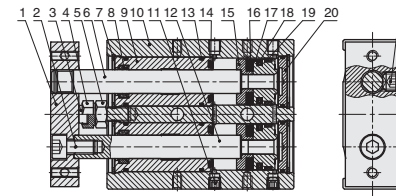
Bore(mm)	6	10	16	20	25	32	
Acting type	Double acting						
Working Medium	Clean air (40 μm filtration)						
Working Pressure (MPa)	0.1~1.0						
Guaranteed Pressure (MPa)	1.5						
Working Temperature (°C)	-20~80(Dry air)						
Cushion type	Both Ends Cushion						
Structure	Double Power						
Lubrication	Not required						
Adjustable Cushion	Return Stroke 0 ~ -5mm						
Bearing	Slide Bearing type / Linear Bearing type						
No-rotating accuracy	Slide Bearing type	±0.1°	±0.15°	±0.13°	±0.11°	±0.1°	±0.08°
	Linear Bearing type	±0.1°	±0.1°	±0.07°	±0.06°	±0.05°	±0.04°
Port Size	M5x0.8			G1/8			

● NPT, PT port size is optional.

Bore (mm)	Standard stroke (mm)						Max. stroke (mm)										
6	10	20	30	40	50		50										
10	10	20	25	30	40	50	60	70	75	80	90	100	100				
16~32	10	20	25	30	40	50	60	70	75	80	90	100	125	150	175	200	200

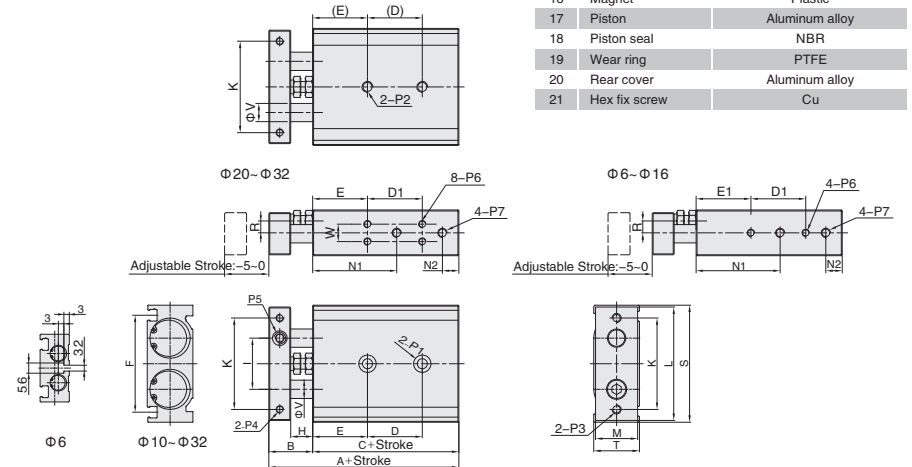
Note: The dimensions of non-std stroke cylinder has the same dimensions as the next longer stroke std. stroke cylinder.
e.g. 27mm stroke cylinder has the same dimensions of 30 std. stroke cylinder.

Internal structure



NO.	Part name	Material
1	Fixing plate	Aluminum alloy
2	Nut	Carbon steel
3	Bumper	POM
4	Adjustable nut	Carbon steel
5	Screw	Carbon steel
6	Piston rod	S45C hard chrome carbon steel
7	C clip	Spring steel
8	Wiper seal	NBR
9	Head cover	Aluminum alloy
10	Body	Aluminum alloy
11	Hex fix screw	Cu
12	Piston rod	S45C hard chrome carbon steel
13	O-ring	NBR
14	Anti-bump cushion	TPU
15	Magnet holder	Aluminum alloy
16	Magnet	Plastic
17	Piston	Aluminum alloy
18	Piston seal	NBR
19	Wear ring	PTFE
20	Rear cover	Aluminum alloy
21	Hex fix screw	Cu

Main Dimensions

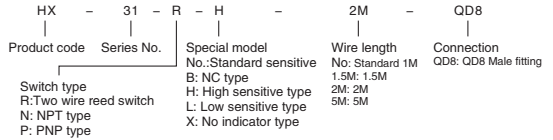


Bore\Sign	A	B	C	D D1								E	E1	F	H	I	K	L	M	N1	N2	R
				10-25	30-50	60-80	90-100	125	150	175	200											
6	58.5	13.5	45	-								13	10	25.8	8	16	28	35	14	24.5	6.5	4.5
10	72	17	55	30	40	50	60	-	-	-	20	20	36.5	9	20	35	44	15	30	8	3.5	
16	79	19	60	25	35	45	55	65	75	145	145	30	30	47.5	9	25	45	56	18	38	8	5
20	94	24	70	30	40	60	60	80	80	100	100	30	-	53	12	28	50	62	23	46	9	6.5
25	96	24	72	30	40	60	60	80	80	100	100	30	-	64	12	35	60	78	28	43	9	9
32	112	30	82	40	50	70	70	90	90	110	110	30	-	76	14	44	75	96	36	53	10	11.5

Bore\Sign	S	T	V	W	P1		P2		P3		P4		P5		P6		P7	
					Φ	Dp	Φ	Dp	Φ	Dp	Φ	Dp	Φ	Dp	Φ	Dp	Φ	Dp
6	37	16	4	-	Φ 6.5	Dp:3.3	Thru.hole: Φ 3.4	-	M3X0.5	M3X0.5	M3X0.5	M3X0.5	M3X0.5	M3X0.5	M3X0.5	M3X0.5	M3X0.5	M3X0.5
10	46	17	6	-	Φ 6.5	Dp:3.3	Thru.hole: Φ 3.4	M4X0.7	Dp:7	M4X0.7	M3X0.5	M5X0.8	M3X0.5	M3X0.5	M3X0.5	M3X0.5	M3X0.5	M3X0.5
16	58	20	8	-	Φ 8	Dp:4.4	Thru.hole: Φ 4.3	M5X0.8	Dp:8	M5X0.8	M4X0.7	M4X0.7	M6X1.0	M4X0.7	M4X0.7	M4X0.7	M4X0.7	M4X0.7
20	64	25	10	9.5	Φ 9.5	Dp:5.3	Thru.hole: Φ 5.2	M6X1.0	Dp:10	M5X0.8	M4X0.7	Dp:6	M8X1.25	M4X0.7	M4X0.7	M4X0.7	M4X0.7	M4X0.7
25	80	30	12	13	Φ 11	Dp:6.3	Thru.hole: Φ 6.8	M8X1.25	Dp:12	M6X1.0	M5X0.8	Dp:7.5	M8X1.25	M5X0.8	M5X0.8	M5X0.8	M5X0.8	M5X0.8
32	98	38	16	20	Φ 11	Dp:6.3	Thru.hole: Φ 6.8	M8X1.25	Dp:12	M6X1.0	M5X0.8	Dp:8	M10X1.5	M5X0.8	M5X0.8	M5X0.8	M5X0.8	M5X0.8

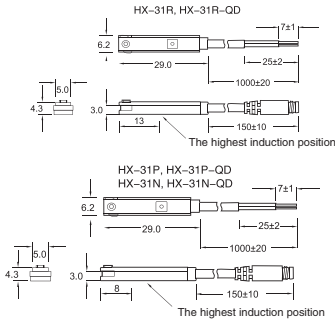


How to Order?

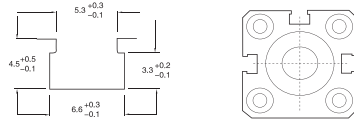


- Note: 1. Testing with standard magnet: $\Phi 15.5 \times \Phi 8 \times 5t$ (Plastic magnet) ;
 2. Sine wave/X、Y、Z 3 axial direction/ each axial direction three times/ each time 11ms;
 3. complex amplitude 1.5mm/10Hz-55Hz sweep frequency, last one minute/ each time X、Y、Z axial direction for one hour;
 4. 1-No/2-output short circuit protection/3=Power reverse connection protection/4=Surge absorption protection

Dimensions

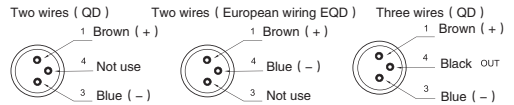


Installation of HX-31



Suitable for FVBC air cylinder

QD fitting wiring



Specification

Type	HX-31R	HX-31N	HX31-P	HX-31RP
Connect Diagram				
Parameter				
Wiring method	2-Wire Type	3-Wire Type		3-Wire Type
Switching logic	SPST Normally Open	Solid State Output, Normally Open		SPST Normally Open
Sensor type	Reed switch	NPN type (Input)	PNP type (Output)	Reed switch
Operating voltage	5 - 240V DC/AC	5 - 30V DC		10-30V DC/AC
Max. switching current	100mA max.	100mA max.		500mA max.
Contact rating	10W max.	3W max.		10W max.
Current consumption	None	8 mA @24V DC max.		10 mA @24V DC max.
Voltage drop	3.5V max.	1.5V max.		0.1V @ 100mA max.
Leakage current	None	0.01mA		None
Indicator	Red LED	Red LED	Yellow LED	Yellow LED
Max. exchange frequency	200Hz	1000Hz		200Hz
Temperature range		10 - 70°C		
Shock	30G	50G		30G
Vibration		9G		
Enclosure classification		IEC 529 IP67 (NEMA 6)		
Protection circuit	None	Output short circuit protection		None
Cable	3.2Φ、2C, Gray color, oil resistance PVC	Power reverse connection protection		None
		3.2Φ、3C, Gray color, oil resistance PVC		