

How to order?

| Series No | Type No | Bore | X Stroke | Magnet No | Piston Rod thread type | Thread Type |
|-----------|--|----------------------------------|------------------------------|------------------------------------|--|--------------------------|
| EG | Blank: Basic type D: Double shaft type C: Air cushion type | 20 25 32 40 50 63 | 20 50 75 100 ... | Blank: no magnet S: with magnet | Blank: Female thread M: Male thread N: No thread | 空白: G P: PT T: NPT |

Order Example:
EG Series basic type cylinder, 25mm bore, 50mm stroke, with magnet, male thread on piston rod, G thread.
ERP code is: EG25X50-S-M

Specifications

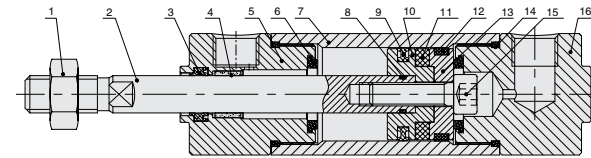
| Bore size(mm) | 20 | 25 | 32 | 40 | 50 | 63 | |
|--------------------------|--|------|------|------|------|------|------|
| Acting type | Double acting | | | | | | |
| Working medium | Clean air(25 μm filtration) | | | | | | |
| Pressure range(MPa) | 0.1~1.0MPa(15~145psi)(1.0~10.0bar) | | | | | | |
| Guaranteed pressure(MPa) | 1.5MPa(215psi)(15bar) | | | | | | |
| Working temperature(°C) | -20~80(Dry air) | | | | | | |
| Speed range(mm/s) | 50~1000 | | | | | | |
| Stroke range | +1.4 0 | | | | | | |
| Cushion type | Anti-bump cushion (Currently developed only 63mm bore) | | | | | | |
| Port size | M5 | | G1/8 | | G1/4 | | |
| Kinetic energy J | male thread on piston rod | 0.28 | 0.41 | 0.66 | 1.20 | 2.00 | 3.40 |
| | female thread on piston rod | 0.11 | 0.18 | 0.29 | 0.52 | 0.91 | 1.54 |

① NPT, PT port size is optional.

Stroke

| Bore(mm) | Standard stroke (mm) | | | | | | Long stroke (mm) | | | | | |
|---------------|----------------------|----|----|----|-----|-----|------------------|-----|----------|-----|-----|----------|
| | 20 | 25 | 32 | 40 | 50 | 63 | | | | | | |
| Double acting | 20 | 25 | 50 | 75 | 100 | 125 | 150 | 200 | 201~1200 | | | |
| | 25 | 25 | 50 | 75 | 100 | 125 | 150 | 175 | 200 | 250 | 300 | 301~1200 |
| | 32 | 25 | 50 | 75 | 100 | 125 | 150 | 175 | 200 | 250 | 300 | 301~1500 |
| | 40 | 25 | 50 | 75 | 100 | 125 | 150 | 175 | 200 | 250 | 300 | 301~1500 |
| | 50 | 25 | 50 | 75 | 100 | 125 | 150 | 175 | 200 | 250 | 300 | 301~1500 |
| | 63 | 25 | 50 | 75 | 100 | 125 | 150 | 175 | 200 | 250 | 300 | 301~1500 |

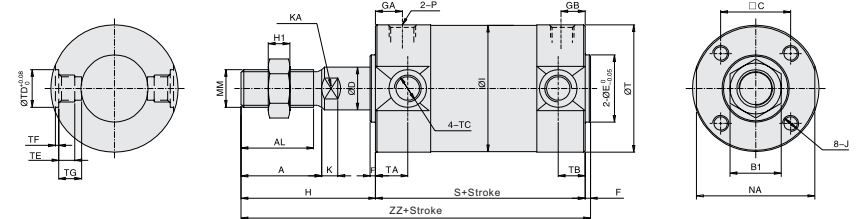
Internal Structure



| No | Part name | Material | No | Part name | Material |
|----|--------------------------|--------------------------------|----|-------------------------|---------------------------|
| 1 | Nut | Carbon steel(Nickel plating) | 9 | Piston seal | NBR(Japanese brand) |
| 2 | Piston rod | Stainless steel(EG20, 25) | 10 | Piston | Aluminum alloy |
| | | Carbon steel(EG32, 40, 50, 63) | | | RbFeB(EG20, 25) |
| 3 | Piston rod seal | TPU | 11 | Magnet | Plastic(EG32, 40, 50, 63) |
| 4 | Self-lubricating bearing | Compound material | 12 | Wear ring | PTFE |
| 5 | Head cover | Aluminum alloy | 13 | Magnet base | Aluminum alloy |
| 6 | Anti-bump cushion | TPU | 14 | O-ring | NBR |
| 7 | Barrel | Aluminum alloy | 15 | Hex cylinder head screw | Carbon steel(Black) |
| 8 | O-ring | NBR | 16 | Rear cover | Aluminum alloy |

Main Dimensions

EG

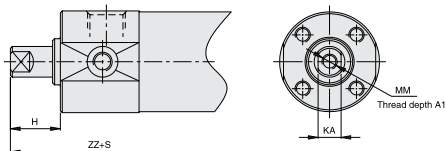


| Bore | Standard Stroke Range | Long Stroke Range | A | AL | B1 | C | D | E | F | H | I | J | K | KA | MM | NA |
|------|-----------------------|-------------------|----|------|----|------|----|----|---|----|----|----------------|-----|----|----------|------|
| 20 | ≤200 | 201~1200 | 18 | 15.5 | 12 | 14 | 8 | 12 | 2 | 35 | 26 | M4X0.7depth7 | 5.5 | 6 | M8X1.25 | 24 |
| 25 | ≤300 | 301~1200 | 22 | 19.5 | 17 | 16.5 | 10 | 14 | 2 | 40 | 31 | M5X0.8depth7.5 | 6 | 8 | M10X1.25 | 29 |
| 32 | ≤300 | 301~1500 | 22 | 19.5 | 17 | 20 | 12 | 18 | 2 | 40 | 38 | M5X0.8depth8 | 6 | 10 | M10X1.25 | 35.5 |
| 40 | ≤300 | 301~1500 | 30 | 27 | 19 | 26 | 16 | 25 | 2 | 50 | 47 | M6X1.0depth12 | 6.5 | 14 | M14X1.5 | 44 |
| 50 | ≤300 | 301~1500 | 35 | 32 | 27 | 32 | 20 | 30 | 2 | 58 | 58 | M8X1.25depth16 | 7.5 | 18 | M18X1.5 | 55 |
| 63 | ≤300 | 301~1500 | 35 | 32 | 27 | 38 | 20 | 32 | 2 | 58 | 72 | M10X1.5depth16 | 7.5 | 18 | M18X1.5 | 69 |

| Bore | Standard Stroke Range | Long Stroke Range | P | S | GA | GB | T | H1 | TA | TB | ZZ | TD | TF | TE | TG | TC | |
|------|-----------------------|-------------------|--------|---------|------|------|------|----|----|----|----------|----------|------|------|------|----------|---------|
| 20 | ≤200 | 201~1200 | M5X0.8 | 69(77) | 13.5 | 13.5 | 26.5 | 6 | 11 | 11 | 11 | 106(114) | 8 | 0.5 | 4 | 5.5 | M5X0.8 |
| 25 | ≤300 | 301~1200 | 1/8" | 69(77) | 10 | 10 | 31.5 | 6 | 11 | 11 | 11 | 111(119) | 10 | 1 | 5 | 6.5 | M6X0.75 |
| 32 | ≤300 | 301~1500 | 1/8" | 71(79) | 10.5 | 9.5 | 38.5 | 6 | 11 | 10 | 11 | 113(121) | 12 | 1 | 5.5 | 7.5 | M8X1.0 |
| 40 | ≤300 | 301~1500 | 1/8" | 78(87) | 11.5 | 10 | 47.5 | 8 | 12 | 10 | 130(139) | 14 | 1.25 | 6 | 8.5 | M10X1.25 | |
| 50 | ≤300 | 301~1500 | 1/4" | 90(102) | 13 | 13 | 58.5 | 11 | 13 | 12 | 150(162) | 16 | 2 | 7.5 | 10 | M12X1.25 | |
| 63 | ≤300 | 301~1500 | 1/4" | 90(102) | 14 | 12 | 72.5 | 11 | 13 | 12 | 150(162) | 18 | 3 | 11.5 | 14.5 | M14X1.5 | |

Note: 1、 With magnet and without magnet, the dimensions are same.
2、 Within the "()" size is the size of long stroke;
3、 G、 PT、 NPT port size is optional.

Dimension of Female thread

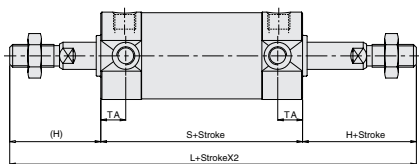


| Bore/Sign | A1 | H | MM | ZZ | KA |
|-----------|----|----|---------|----------|----|
| 20 | 8 | 13 | M4X0.7 | 84(92) | 6 |
| 25 | 8 | 14 | M5X0.8 | 85(93) | 8 |
| 32 | 12 | 14 | M6X1.0 | 87(95) | 10 |
| 40 | 13 | 15 | M8X1.25 | 95(104) | 14 |
| 50 | 18 | 16 | M10X1.5 | 108(120) | 18 |
| 63 | 18 | 16 | M10X1.5 | 108(120) | 18 |

Note:1、 This figure is dimension of female thread ;
2、 Other dimensions are same as male thread.

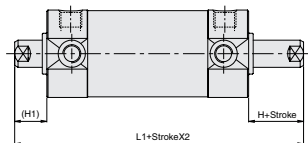
Dimension of Double shaft

EGD

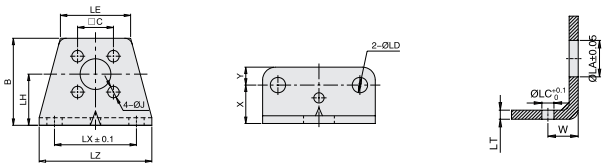


| Bore/Sign | S | H | H1 | L | L1 | TA |
|-----------|-----|----|----|-----|-----|----|
| 20 | 77 | 35 | 13 | 147 | 103 | 11 |
| 25 | 77 | 40 | 14 | 157 | 105 | 11 |
| 32 | 79 | 40 | 14 | 159 | 107 | 11 |
| 40 | 87 | 50 | 15 | 187 | 117 | 12 |
| 50 | 102 | 58 | 16 | 218 | 134 | 13 |
| 63 | 102 | 58 | 16 | 218 | 134 | 13 |

Note:Unlabeled the same size as standard type.



Dimension of Accessories



| Bore/Sign | B | C | X | Y | J | W | LH | LX | LZ | LD | LA | LC | LT | LE | Screw |
|------------|------|------|------|-----|-----|------|----|----|-----|----|------|----|-----|------|-----------|
| FJ-EG20-LB | 34 | 14 | 15 | 7 | 4.5 | 10 | 20 | 32 | 44 | 6 | 12.1 | 4 | 3 | 27.5 | GSA4X8N |
| FJ-EG25-LB | 38.5 | 16.5 | 15 | 7 | 5.5 | 10 | 22 | 36 | 49 | 6 | 14.1 | 4 | 3 | 30 | GSA5X10N |
| FJ-EG32-LB | 45 | 20 | 16 | 8 | 5.5 | 10 | 25 | 44 | 58 | 7 | 18.1 | 4 | 3 | 35.5 | GSA5X10N |
| FJ-EG40-LB | 54.5 | 26 | 16.5 | 8.5 | 6.5 | 10 | 30 | 54 | 71 | 7 | 25.1 | 4 | 3 | 44 | GSA6X12N |
| FJ-EG50-LB | 70.5 | 32 | 22 | 11 | 8.5 | 17.5 | 40 | 66 | 86 | 10 | 30.1 | 5 | 4.5 | 51 | GSA8X20N |
| FJ-EG63-LB | 82.5 | 38 | 22 | 13 | 10 | 17.5 | 45 | 82 | 106 | 12 | 32.1 | 5 | 4.5 | 64.5 | GSA10X20N |