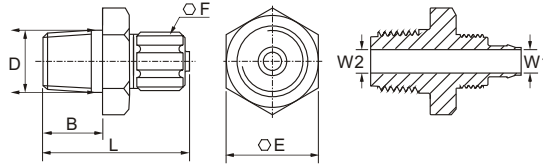


# PK 系列 塑鋼飛速型接頭

series QUICK CONNECTORS

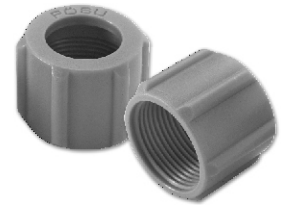
PÖSU  
PNEUMATIC

## PK 直接頭 Quick Connectors



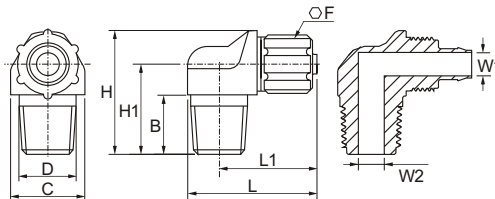
訂購標示 How to order	管牙 (D)	管內徑 (m/m)	管外徑 (m/m)	外觀尺寸 (m/m)							重量 (g)	單價 (NT)
				B	L	E	F	W1	W2			
PK-6-1/8	PT-1/8	4	6	10.3	30.2	13	12	3.3	4.2	3.2	10	
PK-6-1/4	PT-1/4	4	6	12.8	34.1	17	12	3.3	5.3	4.9	11	
PK-8-1/8	PT-1/8	5~6	8	10.4	30.4	13	14	5.3	5.3	3.6	11	
PK-8-1/4	PT-1/4	5~6	8	13.1	33.5	17	14	5.3	5.7	5.5	13	
PK-8-3/8	PT-3/8	5~6	8	14.4	35.3	19	14	5.3	8.2	7.3	15	
PK-10-1/4	PT-1/4	6.5~7	10	13.0	34.3	17	17	5.9	6.0	6.4	13	
PK-10-3/8	PT-3/8	6.5~7	10	14.0	35.9	19	17	5.9	7.9	8.1	15	
PK-12-3/8	PT-3/8	8~9	12	13.7	38.4	19	19	7.9	7.9	9.8	24	

## MPK 螺帽 Locknut



訂購標示 How to order	管外徑 (m/m)	重量 (g)	單價 (NT)
MPK-6	6	0.9	5
MPK-8	8	1.1	6
MPK-10	10	1.8	8
MPK-12	12	2.6	10

## GPK 彎接頭 Elbow Quick Connectors



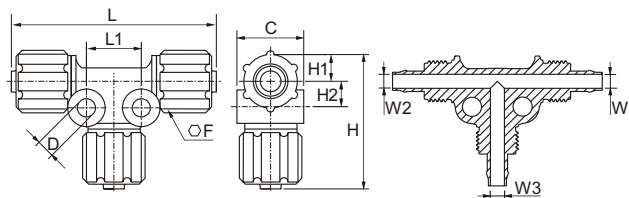
訂購標示 How to order	管牙 (D)	管內徑 (m/m)	管外徑 (m/m)	外觀尺寸 (m/m)										重量 (g)	單價 (NT)
				B	C	F	H	H1	L	L1	W1	W2			
GPK-6-1/8	PT-1/8	4	6	10.6	13	12	22.4	16.4	26.3	20.3	3.3	4.0	3.7	14	
GPK-6-1/4	PT-1/4	4	6	13.1	17	12	25.0	19.0	29.8	22.3	3.3	5.0	5.8	15	
GPK-8-1/8	PT-1/8	5~6	8	10.6	17	14	24.5	17.5	28.3	21.3	5.3	5.3	5.0	14	
GPK-8-1/4	PT-1/4	5~6	8	13.1	17	14	27.4	20.4	29.8	22.3	5.3	5.3	6.6	16	
GPK-8-3/8	PT-3/8	5~6	8	14.2	19	14	28.5	21.0	33.5	24.0	5.3	8.1	8.9	19	
GPK-10-1/4	PT-1/4	6.5~7	10	13.0	17	17	30.5	21.7	32.6	24.1	5.9	6.0	8.8	17	
GPK-10-3/8	PT-3/8	6.5~7	10	14.0	19	17	31.5	22.4	34.5	25.3	5.9	7.9	10.7	19	
GPK-12-3/8	PT-3/8	8~9	12	13.7	19	19	32.8	23.8	36.8	27.3	7.9	7.9	12.6	26	

## TPK 倒鉤式管接頭 Barbed T Connectors



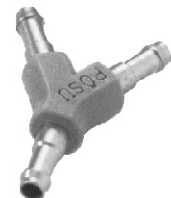
訂購標示 How to order	管內徑 (m/m)	重量 (g)	單價 (NT)
TPK-4	2~2.5	1.8	30
TPK-6	4	3.4	30

## FPK 三通T接頭 T Quick Connectors



訂購標示 How to order	管內徑 (m/m)	管外徑 (m/m)	外觀尺寸 (m/m)										重量 (g)	單價 (NT)	
			C	D	F	H	H1	H2	L	L1	W1	W2			W3
FPK-6	4	6	15.0	4.5	12	30.6	6.8	6.0	49.5	12.0	3.3	3.3	3.3	7.1	26
FPK-8	5~6	8	18.0	4.5	14	31.0	8.0	6.0	48.5	12.0	5.3	5.3	5.3	8.7	28
FPK-10	6.5~7	10	19.8	4.5	17	34.3	8.4	6.3	52.0	12.6	5.9	5.9	5.9	13.2	30
FPK-12	8~9	12	22.0	4.3	19	38.0	11	7.1	57.2	13.0	7.9	7.9	7.9	18.5	45

## YPK 倒鉤式管接頭 Barbed Y Connectors



訂購標示 How to order	管內徑 (m/m)	重量 (g)	單價 (NT)
YPK-4	2~2.5	1.8	30
YPK-6	4	3.5	30